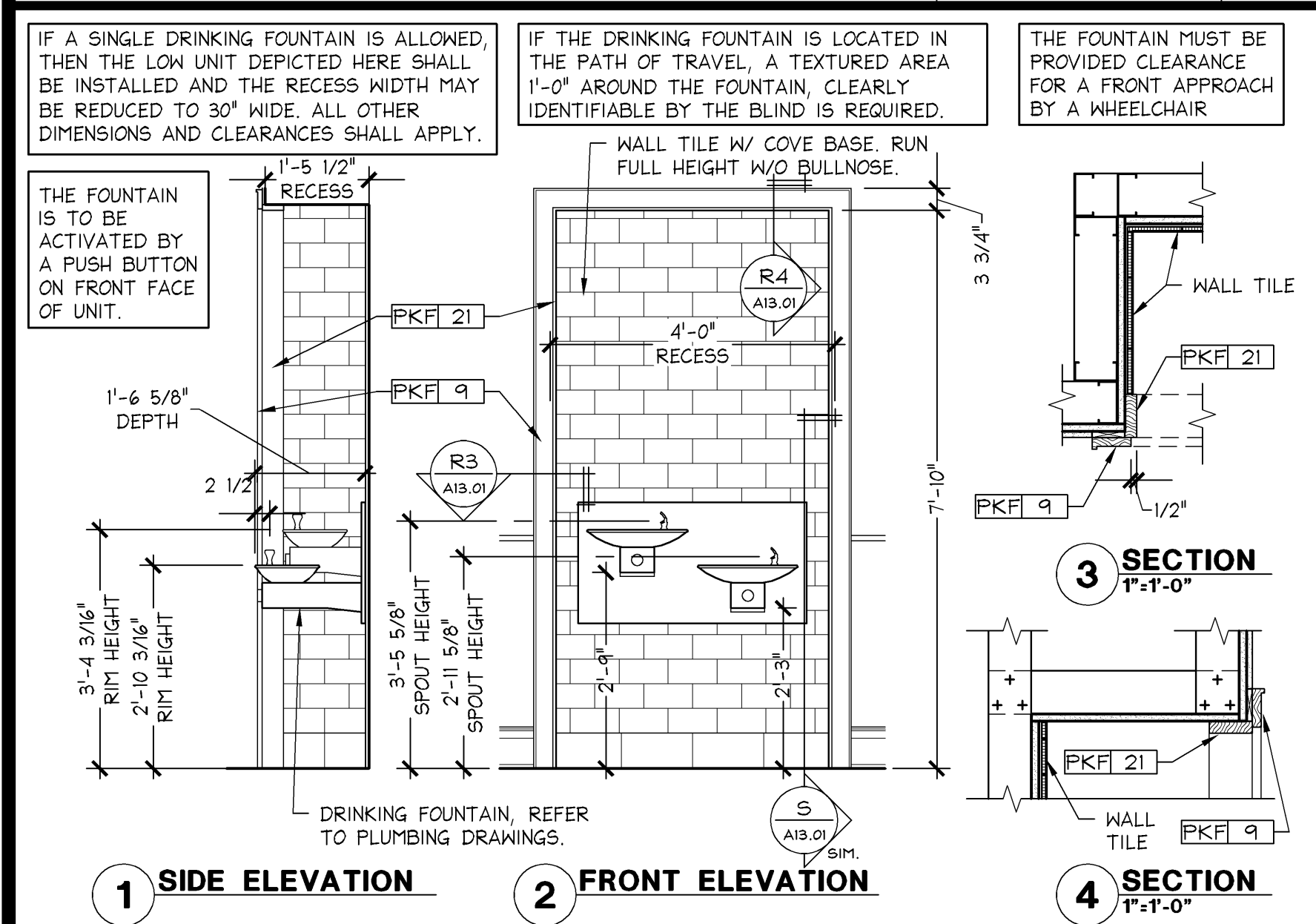


**PINK POWDER ROOM TILE WAINSCOT SECTION DETAIL**

3" = 1'-0"

05D-A1301-S01-DETL

04.04.14



**PINK DRINKING FOUNTAIN (PUBLIC) ELEVATIONS AND DETAILS**

1/2" = 1'-0"

05D-A1301-R01-DETL

02.21.14

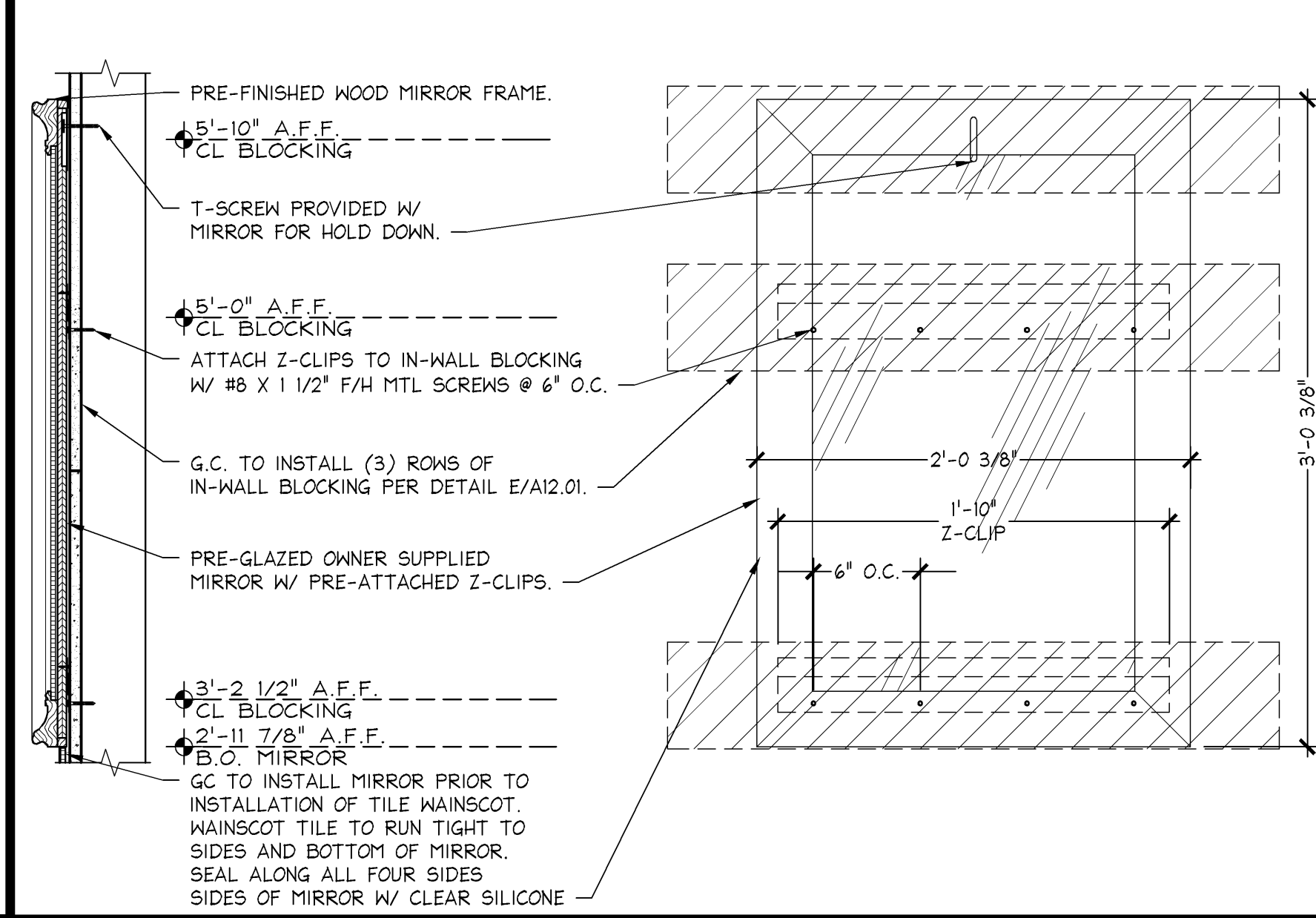
- THE STRUCTURAL STRENGTH OF GRAB BARS SHALL MEET THE FOLLOWING SPECIFICATIONS:
- BENDING STRESS IN A GRAB BAR INDUCED BY THE MAXIMUM BENDING MOMENT FROM THE APPLICATION OF 250 LB (112N) SHALL BE LESS THAN THE ALLOWABLE STRESS FOR THE MATERIAL OF THE GRAB BAR.
  - SHEAR STRESS INDUCED IN A GRAB BAR BY THE APPLICATION OF 250 LB (112N) SHALL BE LESS THAN THE ALLOWABLE SHEAR STRESS FOR THE MATERIAL OF THE GRAB BAR. IF THE CONNECTIONS BETWEEN THE GRAB BAR AND ITS MOUNTING BRACKET OR OTHER SUPPORT IS CONSIDERED TO BE FULLY RESTRAINED, THEN DIRECT AND TORSIONAL SHEAR STRESSES SHALL BE TOTALED FOR THE COMBINED SHEAR STRESS, WHICH SHALL NOT EXCEED THE ALLOWABLE SHEAR STRESS.
  - SHEAR FORCE INDUCED IN A FASTENER OR MOUNTING DEVICE FROM THE APPLICATION OF 250 LB (112N) SHALL BE LESS THAN THE ALLOWABLE WITHDRAWAL LOAD BETWEEN THE FASTENER AND THE SUPPORTING STRUCTURE.
  - TENSILE FORCE INDUCED IN A FASTENER BY A DIRECT TENSION FORCE OF 250 LB (112N) PLUS THE MAXIMUM MOMENT FROM THE APPLICATION OF 250 LB (112N) SHALL BE LESS THAN THE ALLOWABLE WITHDRAWAL LOAD BETWEEN THE FASTENER AND THE SUPPORTING STRUCTURE.
  - GRAB BARS SHALL NOT ROTATE WITHIN THEIR FITTINGS.

**GRAB BAR INSTALLATION DETAIL**

6" = 1'-0"

05D-A1301-P00-DETL

02.21.14

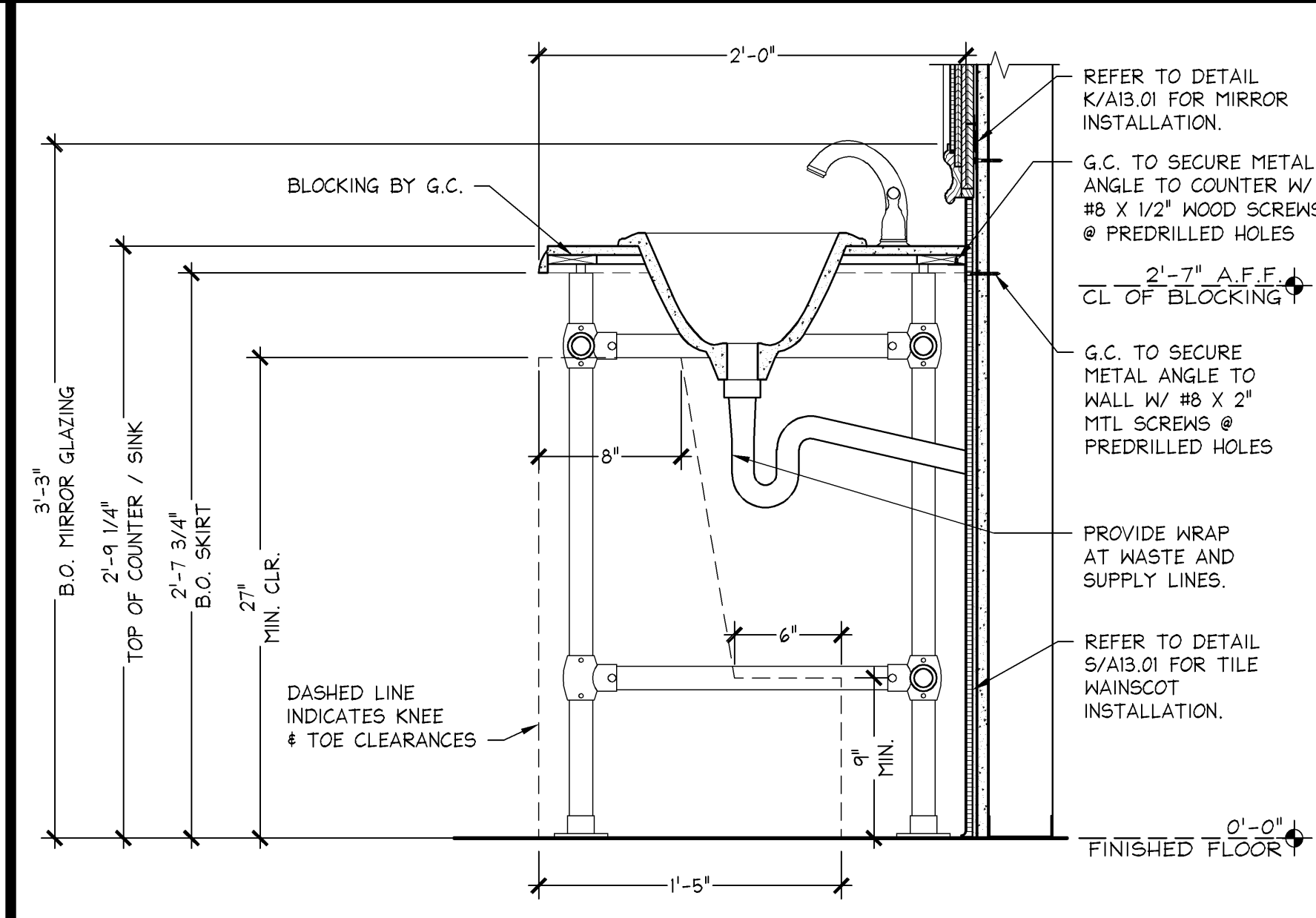


**POWDER ROOM MIRROR INSTALLATION DETAIL**

1 1/2" = 1'-0"

05D-A1301-K00-DETL

02.21.14

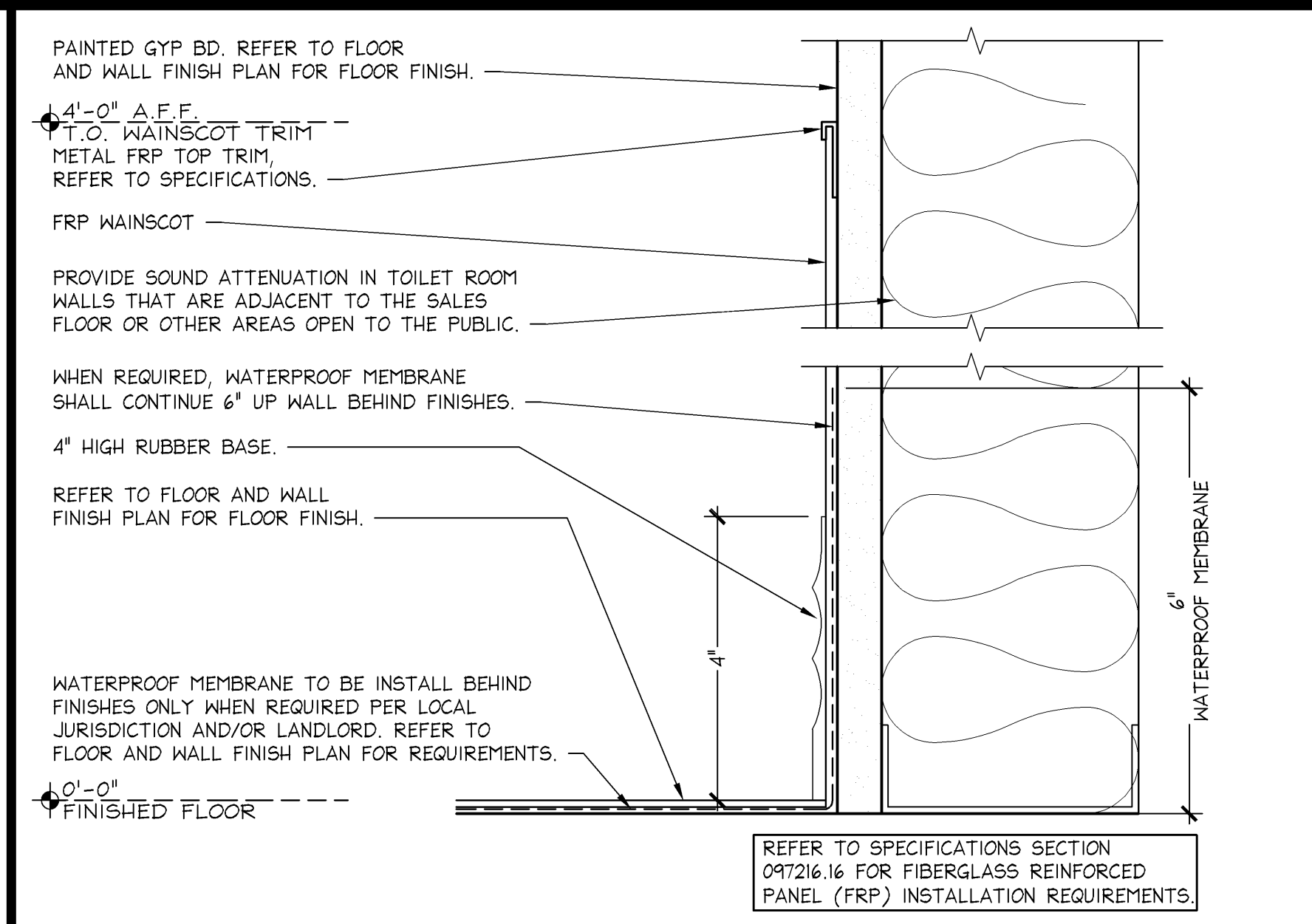


**PINK POWDER ROOM LAVATORY INSTALLATION SECTION**

1 1/2" = 1'-0"

05D-A1301-J01-DETL

02.21.14



**FRP WAINSCOT SECTION DETAIL**

6" = 1'-0"

05D-A1301-H00-DETL

02.21.14

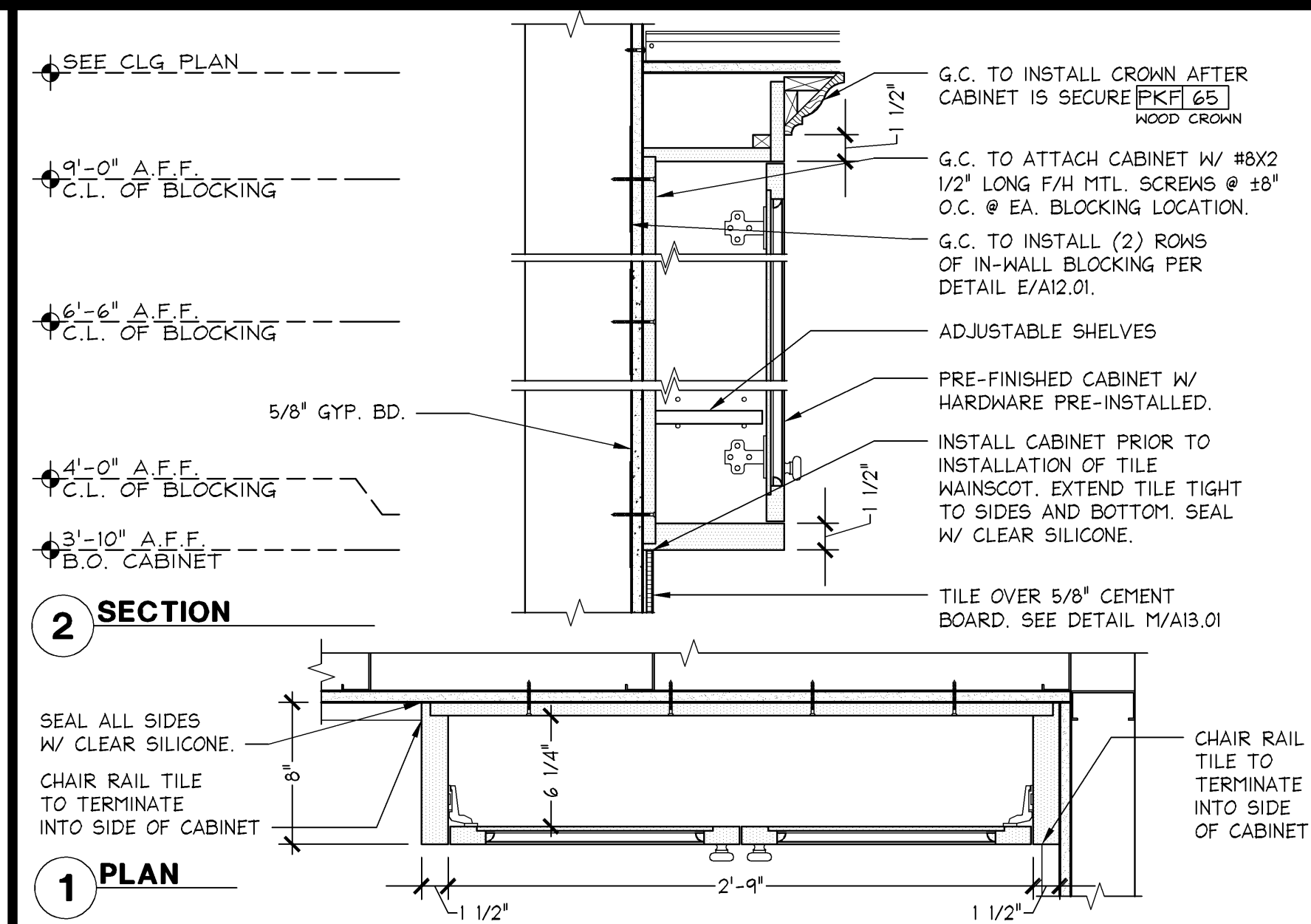
KEY	ITEM	FURN	INST	E	REMARKS
	<b>GENERAL/GLOBAL</b>				
1	DOOR AND JAMB, REFER TO DOOR SCHEDULE A00.02 FOR HARDWARE AND RESPONSIBILITIES				
2	DOOR STOP, ALIGN WITH DOOR HANDLE. PROVIDE BLOCKING PER E/A12.01.				SEE DOOR SCHEDULE A00.02 FOR SPEC AND RESPONSIBILITY
3	FLOOR DRAIN				REFER TO PLUMBING DRAWINGS
4	1 1/2" X 1 1/2" X 48" BRUSHED STAINLESS STEEL CORNER GUARD - GAMCO #CG-2				PURCHASE THROUGH CBC
5	DRINKING FOUNTAIN				REFER TO PLUMBING DRAWINGS
6	DRINKING FOUNTAIN GUARD RAILS - BOBRICK #B19298, INSTALL PER DETAIL P/A13.01				PURCHASE THROUGH CBC
7	MOP SINK BASIN W/ FAUCET SET AND 42" HOSE				REFER TO PLUMBING DRAWINGS
8	HOSE HOLDER - McMASTER-CARR #18505A71				PURCHASE THROUGH CBC
9	FRICITION TYPE MOP HOLDER - GAMCO #HMS-1, G.C. TO PROVIDE IN WALL BLOCKING PER E/A12.01				PURCHASE THROUGH CBC
10	WATER HEATER ABOVE REFER TO STRUCTURAL DWGS FOR SUPPORT				REFER TO PLUMBING DRAWINGS
11	MOTION SENSOR ACTIVATED LIGHT SWITCH				REFER TO ELECTRICAL DWGS
12	GFI RATED DUPLEX OUTLET				REFER TO ELECTRICAL DWGS
13	ACCESSIBLE SIGNAGE				REFER TO DETAIL H/A00.04
14	WATERPROOF MEMBRANE				SEE SPEC. SECTION 071416
	<b>BREAK ROOM/AREA</b>				
20	PRE-FINISHED BASE AND WALL CABINETRY				REFER TO DETAIL K/A14.02
21	SOLID SURFACE COUNTERTOP AND BACKSPLASH				REFER TO DETAIL K/A14.02
22	BREAK ROOM SINK AND FAUCET, REFER TO PLUMBING DWGS.				
23	PAPER TOWEL HOLDER - HAFLE #KT1024, STAINLESS STEEL.				REFER TO DETAIL K/A14.02
24	FRAMED BREAK ROOM USAGE SIGN				PROVIDED BY LLS
25	MICROWAVE, REFER TO ELEC. DWGS. FOR POWER				PROVIDED BY LLS
26	16.2 CU. FT. REFRIGERATOR W/ TOP FREEZER, REFER TO ELEC. DWGS. FOR POWER				PROVIDED BY LLS
27	WYNNIX REFRIGERATOR, SEE ELEC. DWGS. FOR POWER				PROVIDED BY LLS
28	WYNNIX REFRIGERATOR, SEE ELEC. DWGS. FOR POWER				PROVIDED BY OPERATIONS
29	COAT RACK, REFER TO DETAIL G/A14.02				PROVIDED BY LLS
30	(6) CLOTHING HOOKS MOUNTED BELOW COAT RACK - GAMCO #H514, REFER TO DETAIL G/A14.02				PURCHASE THROUGH CBC
31	FULL SIZE LOCKER BANK - 6 UNITS HIGH, G.C. TO SECURE TO WALL THROUGH BACK.				PROVIDED BY LLS
32	PERSONAL LOCKER BANK - 8 UNITS HIGH, G.C. TO SECURE TO WALL THROUGH BACK.				PROVIDED BY LLS
33	FRAMED LOCKER USAGE SIGN, MOUNT ABOVE LOCKER BANK.				PROVIDED BY LLS
34	36" X 36" TABLE				PROVIDED BY LLS
35	STACKING CHAIRS				PROVIDED BY LLS
36	MOBILE TELEVISION CART W/ TV/DVD COMBO UNIT				PROVIDED BY LLS
37	HEADSET STORAGE CART				
38	"ALL" SYSTEM EQUIPMENT, REFER TO DETAIL D/A14.02. SEE ELEC. DWGS FOR POWER REQUIREMENTS				PROVIDE BY LTS BLOCKING AND WIRING BY GC
39	48" X 36" ASSOCIATE RESOURCE CENTER COMMUNICATION BOARD, G.C. TO MOUNT TOP @ 6'-0" A.F.F.				PROVIDED BY LLS
40	48" X 36" COMMUNICATION RESOURCE CENTER COMMUNICATION BOARD, G.C. TO MOUNT TOP @ 6'-0"				PROVIDED BY LLS
41	48" X 36" GET READY CENTER COMMUNICATION BOARD, G.C. TO MOUNT TOP @ 6'-0" A.F.F.				PROVIDED BY LLS
42	LOCKER BANKS, REFER TO FINISH SCHEDULE FOR FINISHES				INSTALL PER DETAIL W/A13.01
43	PRE-FINISHED FRAMED MIRROR, CENTERED ABOVE SINK. MIRROR PROVIDED FULLY GLAZED W/ MOUNTING HARDWARE				REFER TO DETAIL J/A13.01
44	36" X 36" TABLE				PROVIDED BY LLS
45	36" X 36" TABLE				PROVIDED BY LLS
46	36" X 36" TABLE				PROVIDED BY LLS
47	36" X 36" TABLE				PROVIDED BY LLS
48	36" X 36" TABLE				PROVIDED BY LLS
49	36" X 36" TABLE				PROVIDED BY LLS
50	36" X 36" TABLE				PROVIDED BY LLS
51	36" X 36" TABLE				PROVIDED BY LLS
52	36" X 36" TABLE				PROVIDED BY LLS
53	36" X 36" TABLE				PROVIDED BY LLS
54	36" X 36" TABLE				PROVIDED BY LLS
55	36" X 36" TABLE				PROVIDED BY LLS
56	36" X 36" TABLE				PROVIDED BY LLS
57	36" X 36" TABLE				PROVIDED BY LLS
58	36" X 36" TABLE				PROVIDED BY LLS
59	36" X 36" TABLE				PROVIDED BY LLS
60	36" X 36" TABLE				PROVIDED BY LLS
61	36" X 36" TABLE				PROVIDED BY LLS
62	36" X 36" TABLE				PROVIDED BY LLS
63	36" X 36" TABLE				PROVIDED BY LLS
64	36" X 36" TABLE				PROVIDED BY LLS
65	36" X 36" TABLE				PROVIDED BY LLS
66	36" X 36" TABLE				PROVIDED BY LLS
67	36" X 36" TABLE				PROVIDED BY LLS
68	36" X 36" TABLE				PROVIDED BY LLS
69	36" X 36" TABLE				PROVIDED BY LLS
70	36" X 36" TABLE				PROVIDED BY LLS
71	36" X 36" TABLE				PROVIDED BY LLS
72	36" X 36" TABLE				PROVIDED BY LLS
73	36" X 36" TABLE				PROVIDED BY LLS
74	36" X 36" TABLE				PROVIDED BY LLS
75	36" X 36" TABLE				PROVIDED BY LLS
76	36" X 36" TABLE				PROVIDED BY LLS
77	36" X 36" TABLE				PROVIDED BY LLS
78	36" X 36" TABLE				PROVIDED BY LLS
79	36" X 36" TABLE				PROVIDED BY LLS
80	36" X 36" TABLE				PROVIDED BY LLS
81	36" X 36" TABLE				PROVIDED BY LLS
82	36" X 36" TABLE				PROVIDED BY LLS
83	36" X 36" TABLE				PROVIDED BY LLS
84	36" X 36" TABLE				PROVIDED BY LLS
85	36" X 36" TABLE				PROVIDED BY LLS
86	36" X 36" TABLE				PROVIDED BY LLS
87	36" X 36" TABLE				PROVIDED BY LLS
88	36" X 36" TABLE				PROVIDED BY LLS
89	36" X 36" TABLE				PROVIDED BY LLS
90	36" X 36" TABLE				PROVIDED BY LLS
91	36" X 36" TABLE				PROVIDED BY LLS
92	36" X 36" TABLE				PROVIDED BY LLS
93	36" X 36" TABLE				PROVIDED BY LLS
94	36" X 36" TABLE				PROVIDED BY LLS
95	36" X 36" TABLE				PROVIDED BY LLS
96	36" X 36" TABLE				PROVIDED BY LLS
97	36" X 36" TABLE				PROVIDED BY LLS
98	36" X 36" TABLE				PROVIDED BY LLS
99	36" X 36" TABLE				PROVIDED BY LLS
100	36" X 36" TABLE				PROVIDED BY LLS

**AMENITY KEYNOTES / RESPONSIBILITY SCHEDULE**

1/2" = 1'-0"

05D-A1301-A01-NOTE

04.04.14



**PINK POWDER ROOM CABINET INSTALLATION DETAILS**

1 1/2" = 1'-0"

05D-A1301-D00-DETL

04.04.14

KEY	ITEM	FURN	INST	E	REMARKS
	<b>OFFICE/TRAINING ROOMS</b>				
60	DESK LAMINATE TOP, BRACKETS AND GROMMETS				REFER TO DETAIL E/A14.02
61	WALL MOUNTED OVERHEAD CABINET WITH SLIDING TRANSLUCENT DOOR, LENGTH (42" OR 48") AS INDICATED IN PLAN, PROVIDED W/ TASK LIGHTING, REFER TO ELEC DWGS				PROVIDED BY LLS
62	TASK CHAIR				PROVIDED BY LLS
63	LATERAL FILE CABINET - 4 DRAWERS HIGH				PROVIDED BY LLS
64	NOT USED				
65	MOBILE PEDESTAL FILE CABINET				PROVIDED BY LLS
66	COMPUTER WORKSTATION (INDICATED W/ HATCHED AREA)				REFER TO ELEC DWGS.
67	IP CAMERA WORKSTATION (INDICATED W/ HATCHED AREA)				REFER TO ELEC DWGS.
68	WALL MOUNTED SHELVING FOR CCTV SUPPORT, STANDARDS, BRACKETS, AND CLIPS. SEE DETAIL A-2A/A14.01				NOTE: PARTICLE BOARD SHELVES PROVIDED BY GC
69	MAILBOX UNIT, SET ON FILE CABINET OR DESK SURFACE				PROVIDED BY LLS
70	INFORMATION LOCK BOX PLACED ON FLOOR BELOW DESK				
71	SMALL SAFE, G.C. TO SECURE PER MFG SPECIFICATIONS				
72	MOBILE TRAINING ROOM BOOKCASE				PROVIDED BY LLS
73	MELAMINE DRY-ERASE BOARD W/ ALUMINUM FRAME AND MARKER TRAY 24"x36", MOUNT TOP @ 5'-0" A.F.F.				PROVIDED BY LLS
74	MAGNETIC DRY-ERASE CALENDAR BOARD 18"x30", MOUNT TO OUTSIDE OF DOOR @ 5'-0" A.F.F.				PROVIDED BY LLS
75	FURNISH THE CERTIFICATE OF OCCUPANCY AND A LIST OF THE NAMES, ADDRESSES AND TELEPHONE NUMBERS OF ALL SUBCONTRACTORS INCLUDING ALL LSPC PROVIDED SUBCONTRACTORS. MOUNT IN SEPARATE 8 1/2" X 11" FRAMES.				MOUNT AT FACE HEIGHT, ON THE OFFICE SIDE OF THE MANAGER'S OFFICE DOOR.
76	MANAGER'S OFFICE BULLETIN BOARD W/ CLOTH COVER 36"x48", MOUNT TOP @ 6'-0" A.F.F.				PROVIDED BY LLS
	<b>TOILET ROOMS</b>				
70	WATER CLOSET				REFER TO PLUMBING DRAWINGS
71	WATER CLOSET				REFER TO PLUMBING DRAWINGS
72	CLOTHING HOOK - GAMCO #76727, SATIN FINISH, G.C. TO PROVIDE IN WALL BLOCKING PER E/A12.01.				PURCHASE THROUGH CBC
73	1 1/4" DIA. GRAB BAR - KOHLER PURIST 18" = #K-11842, 24" = #K-11843, 36" = #K-11845, 42" = #K-11846				SEE ELEVATION FOR SIZE INSTALL PER DETAIL P/A13.01
74	SINGLE ROLL SURFACE MOUNTED TOILET PAPER HOLDER - AMERICAN STANDARD #8336.230, SATIN NICKEL				G.C. TO PROVIDE IN WALL BLOCKING PER DETAIL E/A12.01
75	RECESSED SANITARY NAPKIN DISPOSAL - BOBRICK #B-3553, STAINLESS STEEL				PURCHASE THROUGH CBC
76	SURFACE MOUNTED TOILET SEAT COVER DISPENSER - BOBRICK #B-221, PROVIDE IN WALL BLOCKING PER DETAIL E/A12.01				PURCHASE THROUGH CBC
77	RECESSED WASTE RECEPTACLE - GAMCO #WR-9				PURCHASE THROUGH CBC
78	HAND DRYER - DYSON AIR AB14-PC-ABS, GRAY FINISH, PROVIDE BLOCKING PER E/A12.01 @ 1" AND 2'-7" A.F.F.				REFER TO ELEC DWGS FOR POWER REQUIREMENTS
79	WALL MOUNTED LIGHT SCONCE				REFER TO LIGHTING PLAN
80	WALL MOUNTED LIGHT SCONCE				REFER TO LIGHTING PLAN
81	WALL MOUNTED LIGHT SCONCE				REFER TO LIGHTING PLAN
82	WALL MOUNTED LIGHT SCONCE				REFER TO LIGHTING PLAN
83	WALL MOUNTED LIGHT SCONCE				REFER TO LIGHTING PLAN
84	WALL MOUNTED LIGHT SCONCE				REFER TO LIGHTING PLAN
85	WALL MOUNTED LIGHT SCONCE				REFER TO LIGHTING PLAN
86	WALL MOUNTED LIGHT SCONCE				REFER TO LIGHTING PLAN
87	WALL MOUNTED LIGHT SCONCE				REFER TO LIGHTING PLAN
88	WALL MOUNTED LIGHT SCONCE				REFER TO LIGHTING PLAN
89	WALL MOUNTED LIGHT SCONCE				REFER TO LIGHTING PLAN
90	WALL MOUNTED LIGHT SCONCE				REFER TO LIGHTING PLAN
91	WALL MOUNTED LIGHT SCONCE				REFER TO LIGHTING PLAN
92	WALL MOUNTED LIGHT SCONCE				REFER TO LIGHTING PLAN
93	WALL MOUNTED LIGHT SCONCE				REFER TO LIGHTING PLAN
94	WALL MOUNTED LIGHT SCONCE				REFER TO LIGHTING PLAN
95	WALL MOUNTED LIGHT SCONCE				REFER TO LIGHTING PLAN
96	WALL MOUNTED LIGHT SCONCE				REFER TO LIGHTING PLAN
97	WALL MOUNTED LIGHT SCONCE				REFER TO LIGHTING PLAN
98	WALL MOUNTED LIGHT SCONCE				REFER TO LIGHTING PLAN
99	WALL MOUNTED LIGHT SCONCE				REFER TO LIGHTING PLAN
100	WALL MOUNTED LIGHT SCONCE				REFER TO LIGHTING PLAN
	<b>POWDER ROOM - PINK</b>				
90	CONSOLE TABLE LAVATORY W/ SOLID SURFACE TOP				REFER TO DETAIL J/A13.01 AND PLUMBING DRAWINGS
91	PRE-FINISHED FRAMED MIRROR, CENTERED ABOVE SINK. MIRROR PROVIDED FULLY GLAZED W/ MOUNTING HARDWARE				REFER TO DETAIL K/A13.01
92	NOT USED				
93	RECESSED MOUNTED LIGHT SCONCE				REFER TO LIGHTING PLAN
94	PRE-FINISHED FRAMED MIRROR, MOUNTED TO DOOR. MIRROR PROVIDED FULLY GLAZED W/ MOUNTING HARDWARE				REFER TO DETAIL M/A10.07
95	SURFACE MOUNTED PRE-FINISHED MIRROR CABINET				REFER TO DETAIL D/A13.01
96	BRASS HOOK				REFER TO DETAIL K/A10.09

**AMENITY KEYNOTES / RESPONSIBILITY SCHEDULE**

1/2" = 1'-0"

05D-A1301-A01-NOTE

04.04.14

**GreenbergFarrow**

1430 West Peachtree Street NW  
Suite 200  
Atlanta, GA 30309  
t. 404.601.4000 f. 404.601.3970

**Limited brands**

LIMITED STORE PLANNING, INC.  
d/b/a STORE DESIGN & CONSTRUCTION

Three Limited Parkway - Columbus, Ohio 43230  
Telephone: 614.415.7000 • Fax: 614.415.7349

PROJECT INFORMATION:

010501726

**PINK VICTORIA'S SECRET**

FAYETTE MALL  
3401 NICHOLASVILLE RD  
SPACE # 1-904  
LEXINGTON, KY 40503

SCOPE: DESIGN TYPE: LS&C PROJECT #:

151534  
20140534

REVISIONS:

DATE ISSUED: 09-05-2014  
DESIGNED BY: APL  
DRAWN BY: AS  
CHECKED BY: AD

AMENITY NOTES, DETAILS AND RESPONSIBILITY

DRAWING NUMBER:

**A13.01**